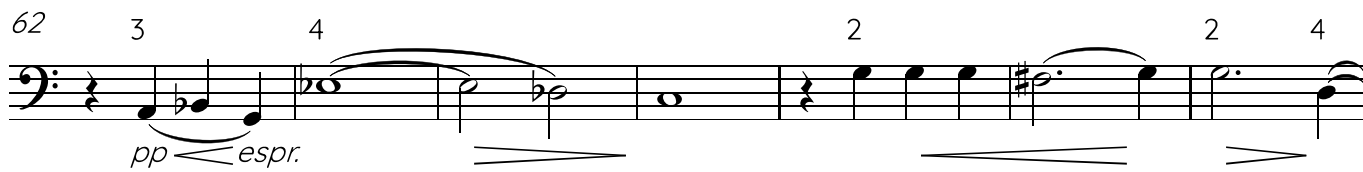
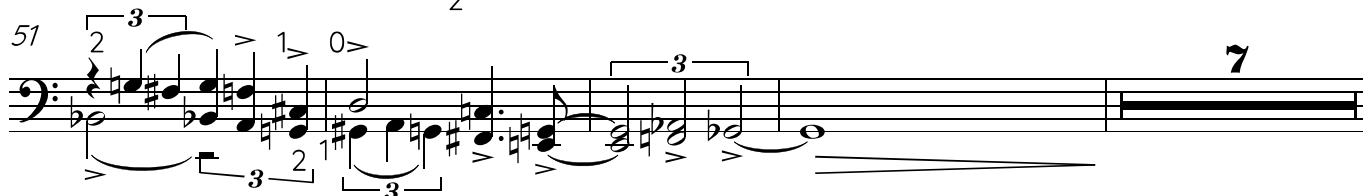
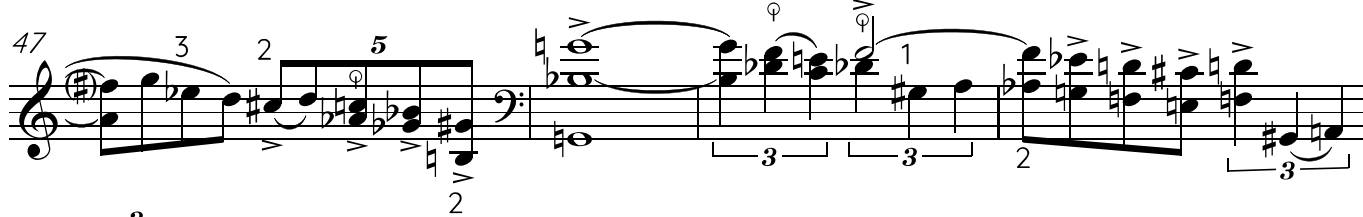
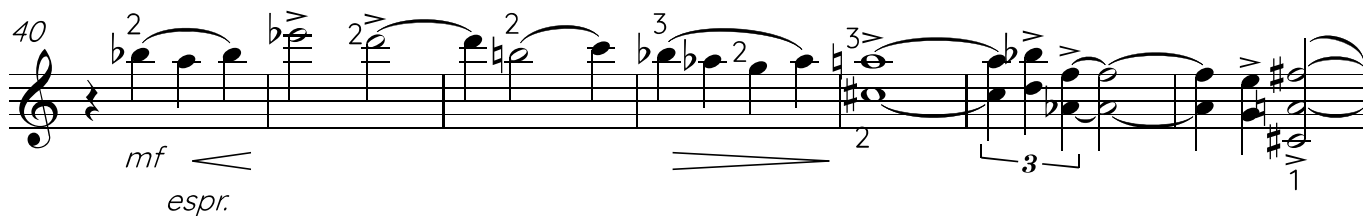
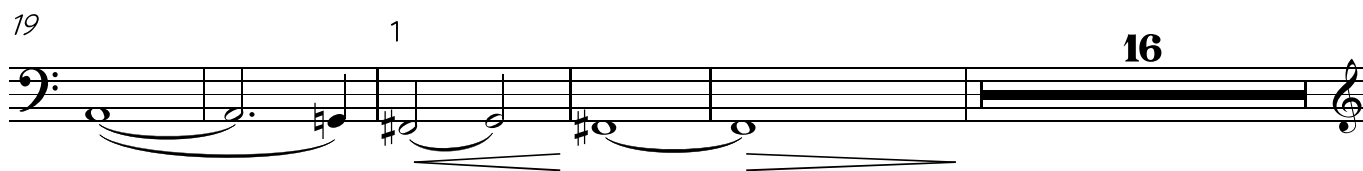
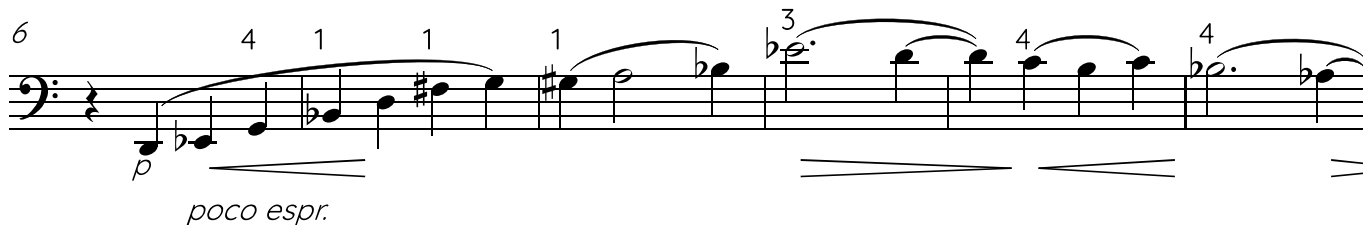
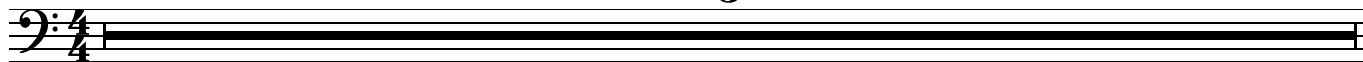


# Виолончель Variations on a theme of Haydn's canon "Tod ist ein langer Schlaf"

Edison Denisov

Adagio

5



Виолончель

2

77 *f* *ff*

82 *espr.* *fp*

86 *(tr)* *Piu mosso*

89

*b tr* *espr.*

*P*

*tr*

*(tr)*

90 *tr*

92 *mf*

Measures 92-93: Bass clef, 6/8 time. Measure 92: 5 0 2 1 1 1 6 1. Measure 93: 3 2. Fingering numbers are placed above notes. A slur covers measures 92-93. Dynamics include *mf* and *pp*.

94 *pp*

Measures 94-95: Treble clef, 6/8 time. Measure 94: 3 2 5 4 5 4 1 7 2 7 1. Measure 95: 2 1 2 3 2 3 2 3. Fingering numbers are placed above notes. A slur covers measures 94-95. Dynamics include *pp*.

95

Measures 95-96: Treble clef, 6/8 time. Measure 95: 2 1 2 3 2 3 2 3. Measure 96: 3 7 2 4 4 4 3 3 9 2. Fingering numbers are placed above notes. A slur covers measures 95-96.

96

Measures 96-97: Treble clef, 6/8 time. Measure 96: 3 7 2 4 4 4 3 3 9 2. Measure 97: 3 3 1 7 2 1 7 1 1. Fingering numbers are placed above notes. A slur covers measures 96-97.

97

Measures 97-98: Bass clef, 6/8 time. Measure 97: 3 3 1 7 2 1 7 1 1. Measure 98: 2 0 4 4 4 4 2 2. Fingering numbers are placed above notes. A slur covers measures 97-98.

98

Measures 98-99: Bass clef, 6/8 time. Measure 98: 2 0 4 4 4 4 2 2. Measure 99: 1 2 2 1 1 9 1 4 1. Fingering numbers are placed above notes. A slur covers measures 98-99.

99

Measures 99-100: Bass clef, 6/8 time. Measure 99: 1 2 2 1 1 9 1 4 1. Measure 100: 2 3 2 3 2 2 4 4 1 4. Fingering numbers are placed above notes. A slur covers measures 99-100. Dynamics include *mf*.

100 *mf*

Measures 100-101: Treble clef, 6/8 time. Measure 100: 2 3 2 3 2 2 4 4 1 4. Measure 101: 3 4 4 4 1. Fingering numbers are placed above notes. A slur covers measures 100-101. Dynamics include *mf* and *pp*.

101 *pp*

Measures 101-102: Bass clef, 6/8 time. Measure 101: 3 4 4 4 1. Measure 102: 1. Fingering numbers are placed above notes. A slur covers measures 101-102. Dynamics include *pp*.

Виолончель

4

102 *mf* *p*

103 *pp*

104

105

106

107 *ff* *espr.*

109 *f pizz.* *p* *ff*

Виолончель

112 *f* 3 3 5 3 5

114 5 3 5 3

116 4 3 4 3 *arco* 3 *ff* *espr.* 1

117 2 1 1 1 1 1 1 1

118 1 3 1 2 2 3 2 3 *φ*

119 3 *φ* 3 5 3 2 4 4 2 1 0 *tr*

121 1 5 0 6 1 1 1 *φ* 1 *tr*

123 3 3 1 6 3 3 3 3 *φ* *p* 3 *φ*

*pp leggiero*

124 3 0 3 7 1 0 7 1 2 1

125 2 2 3 4 3 4 4 4 2

126 3 0 3 3 3 4

127 4 0 2 1 3 0 2 2 4

II

Виолончель

128

6 1 3 3 3 3 3 2 2

129 2 2 3 3 4 3 1 0 1

130 2 4 1 1 1 1 4

131 4 4 4 4 0 1 2 0

132 2 0 2 3 4 3 4 3 3

133 4 3 1 1 2 0 1 0 1

134

3 4 3 4 4 4 0 1

135 1 1 1 1 2 1 1

136 2 3 4 4 1 1 1

137 3 4 4 3 1 1 2 1

138 3 4 4 4 2 2 2 4 3 4

139 3 2 1 1 3 1

140 1 4 1 3 1 1 3 1 1

Виолончель

141 2 3 3 3 4 1 4b 4 7

142 *mf* 3 1 3 2 4 2 4

143 2 1 2 2 1 4 4

144 4 1 0 1 1 1 2

145 4 4 2 4 3 3 4 2 1

146 0 1 1 2 1 1 1 1

*pp dolce*

147 1 2 1 1 1 2 1

148 1<sup>||</sup> 2 1 3 3 3 4 4

149 2 3 4 3 4 4 1 1 1

150 2 4 4 1 1 1 1

151 4 4 3 4 2 1 1 1

152 1 1 1 1 1 1 1

Detailed description: This page contains a musical score for a cello, numbered 141 to 152. The score is written in a single system with two staves: a treble clef staff on top and a bass clef staff on the bottom. The music is in a key with one flat (B-flat major or D minor) and a 4/4 time signature. The notation includes various rhythmic values, accidentals, and fingerings. Measure 141 starts with a treble clef staff and a bass clef staff. Measure 142 has a dynamic marking of *mf*. Measure 146 has a dynamic marking of *pp dolce*. The score is divided into measures by vertical bar lines, and some measures contain multiple notes with stems. Fingerings are indicated by numbers 1-4 above or below notes. Some measures have a double bar line with a repeat sign (1<sup>||</sup>).

Виолончель

8 153 154 155 157 159 161 163 167 170 175 181 186

1 2 3 3 3 3 4

3 3 1 3 2

2 1 2 3 1 2

4 pp 2 2 3 4 4 7 pp 3

2 2 3 4 5 2 1 trm

1 4 5 4 7 1 1 trm 4 7 1 1 5

3 2 4 4 3 2 3 3 3 4

*f espr.* *Piu mosso* *Tempo I* *mf* *mf* *espr.*

1 4 3 3 3 3

*Piu mosso* *Tempo I* *mf* *mf*

4 1 3 2 1 1

*mf* *p*

3 1 *espr.*

2 *pp dolce* *ppp*